

easy
LIVING



fixed price
\$861,700*

Images for illustrative purposes only & may depict upgrade options available at additional charges such as lighting, window furnishings, timber look garage door & timber windows. Pricing also excludes features not supplied by Carlisle inc fencing, landscaping, letterbox, decking & driveway. Façade details inc entry door, window sizes & placements may vary between house types & sizes. Refer to working drawings for specific locations and sizes.

Home buying
made easy
better inclusions##

Westlake 23 , Sierra 2 Façade



Lot 3407 (400m²) Modeina, BURNSIDE
Land Orientation: SOUTH

Perfect for first home buyers and investors!

6 easy steps to your brand new home

Plus a huge list of standard and promotional inclusions##

Fixed price site costs and connections

Developer and council requirements

20mm Caesarstone benchtops to kitchen

Upgraded kitchen appliances incl. dishwasher

Feature overhead kitchen cupboards

Glass splashback to kitchen

Laundry fit-out

Feature staircase balustrade

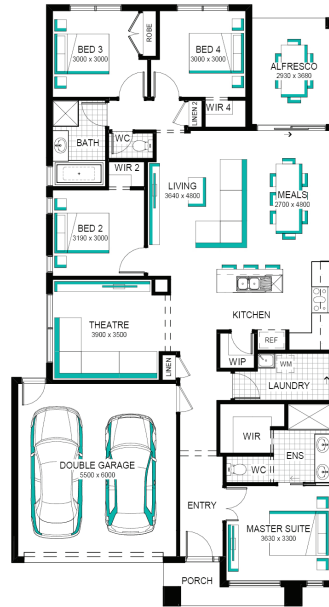
LED lighting

Upgraded H-Class slab

Double glazing throughout

\$5,000 off fully rendered Hebel facades*

7 star energy rating



CARLISLE
HOMES

FOR ENQUIRIES CONTACT:

Robert Pryzler 0408 808 698 | w: easylivingbycarlisle.com.au

Open Saturday-Wednesday from 11am - 5pm

3 - 5 Best Drive DEANSIDE 3336



*Fixed Price current as of 23/05/2024. Pricing based on developer engineering plans & plan of subdivision. Hebel homes may be smaller than dimensions shown on the floorplan due to the external wall thickness; see working drawings for Hebel home dimensions. Confirm land prices and availability prior to purchase. Subject to developer and council approval. Price does not include any stamp duty, government, legal or bank charges. Alterations may incur additional charges. Carlisle reserves the right to withdraw or amend pricing, inclusions and promo without notice. Bushfire (BAL) requirements will be credited back to the client if Carlisle Homes receives confirmation that the house is not being constructed in a BAL designated area. This cannot be confirmed until site survey and property information from relevant authorities is received. ##Home buying made easy promotion applies to new quotes and initial deposits on Carlisle's Easyliving homes from 1 May 2024, and is not available in conjunction with any other offers. *Hebel discount taken off full retail price. Carlisle reserves the right to withdraw or change pricing, inclusions or promotion without notice. ^For further details on our '12 month price lock', or promotional inclusions, speak to a Sales Consultant or visit carlislehomes.com.au/disclaimer. Registered Building Practitioner CDB-U 50143