

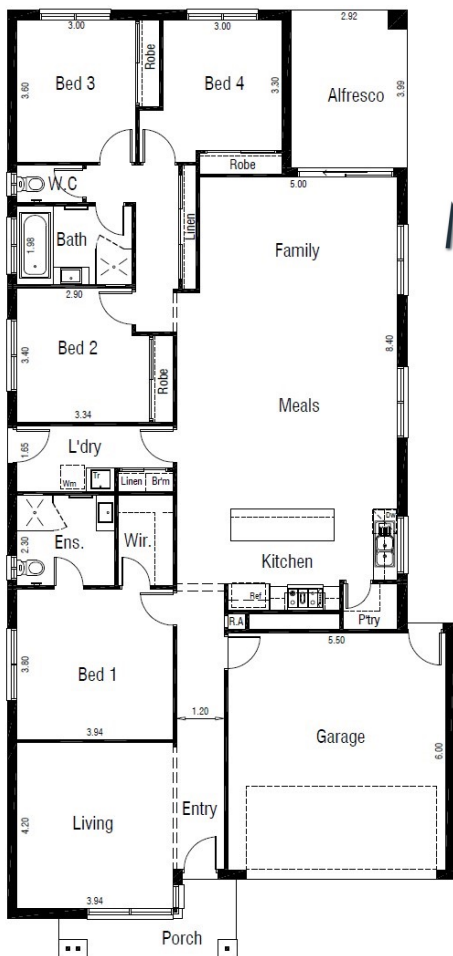


DAYMAN 26
TITLE: TITLED
LAND

\$842,340

SITE COSTS & TURN KEY
GREAT FAMILY HOME!

Lot 3407 Bardot Way, BURNSIDE



MODEINA
ANOTHER DENNIS FAMILY COMMUNITY

400m²



4	2	2
		

HOUSE & LAND PACKAGE INCLUDES:

- ALL DESIGN GUIDELINES
- CHOICE OF FACADE'S
- 2590 HIGH CEILINGS
- FRONT & REAR LANDSCAPING
- FENCES, BLINDS & LETTERBOX
- 900MM APPLIANCES
- 20MM STONE KIT, ENSUITE & BATHROOM
- HEATING AND COOLING
- COLOURED CONCRETE DRIVEWAYS & PATH
- **PLUS MUCH MORE!**

ONLY IN APRIL: \$10K DISCOUNT ON
TITLED PACKAGES!

Jason Sbriglio

0402 365 240

Jason@cpmcgroup.com.au

Images for illustration purposes only and may include examples of upgrade options along with landscaping, blinds and décor light fittings. Site costs need to be confirmed with Central Property Sales Representative if they are fixed or an allowance has been made. Design guidelines are included however subject to developer's final approval. Pricing may vary subject to land availability.