



**DAYMAN 23**  
**TITLE: Q1 2025**

**\$863,650**

**SITE COSTS & TURN KEY  
GREAT FAMILY HOME**

Lot 3214 Mona Circuit, BURNSIDE

**MODEINA**  
ANOTHER DENNIS FAMILY COMMUNITY

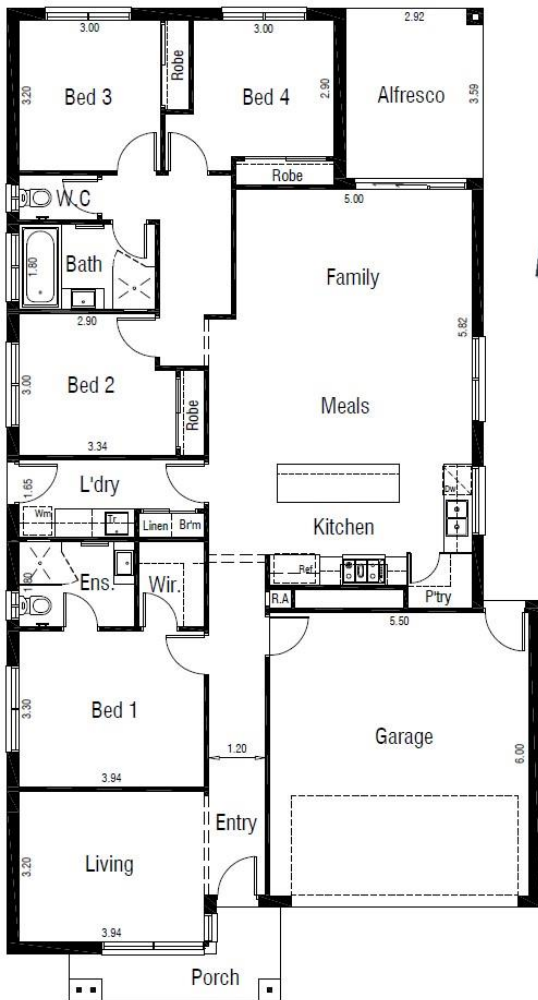
400m<sup>2</sup>



4	2	2
		

**HOUSE & LAND PACKAGE INCLUDES:**

- ALL DESIGN GUIDELINES
- CHOICE OF FACADE'S
- 2590 HIGH CEILINGS
- FRONT & REAR LANDSCAPING
- FENCES, BLINDS & LETTERBOX
- 900MM APPLIANCES
- 20MM STONE KIT, ENSUITE & BATHROOM
- HEATING AND COOLING
- COLOURED CONCRETE DRIVEWAYS & PATH
- **PLUS MUCH MORE!**



**Lee Gonera**

0407 310 054

lee@cpmcgroup.com.au

Images for illustration purposes only and may include examples of upgrade options along with landscaping, blinds and décor light fittings. Site costs need to be confirmed with Central Property Sales Representative if they are fixed or an allowance has been made. Design guidelines are included however subject to developer's final approval. Pricing may vary subject to land availability.