


# WHAT'S GOING ON AT MODEINA

 ANOTHER DENNIS FAMILY COMMUNITY

WINTER 2018 NEWSLETTER

## INSIDE:

---

**Development Update**

---

**Burnside Primary School**

---

**Community Centre Extension**

---

**Kororoit Creek Corridor**

---

**Westwood Drive Link Begins**

---

**Easter Egg Hunt**

---

**Movie Night**

---

**Testimonial**

---





# Development Update

Modeina’s civil contractors have made the most of the favourable weather conditions in recent months. Works will commence in August on the extension to the Central Reserve which, once complete, will feature a new playground and kick about space adjacent to the existing BBQ facilities.

Construction of Gates and Milano Roads, both of which run around the perimeter of the new Burnside Primary School site, remains on track for mid year completion in plenty of time for the facility’s opening early next year.

## Burnside Primary School

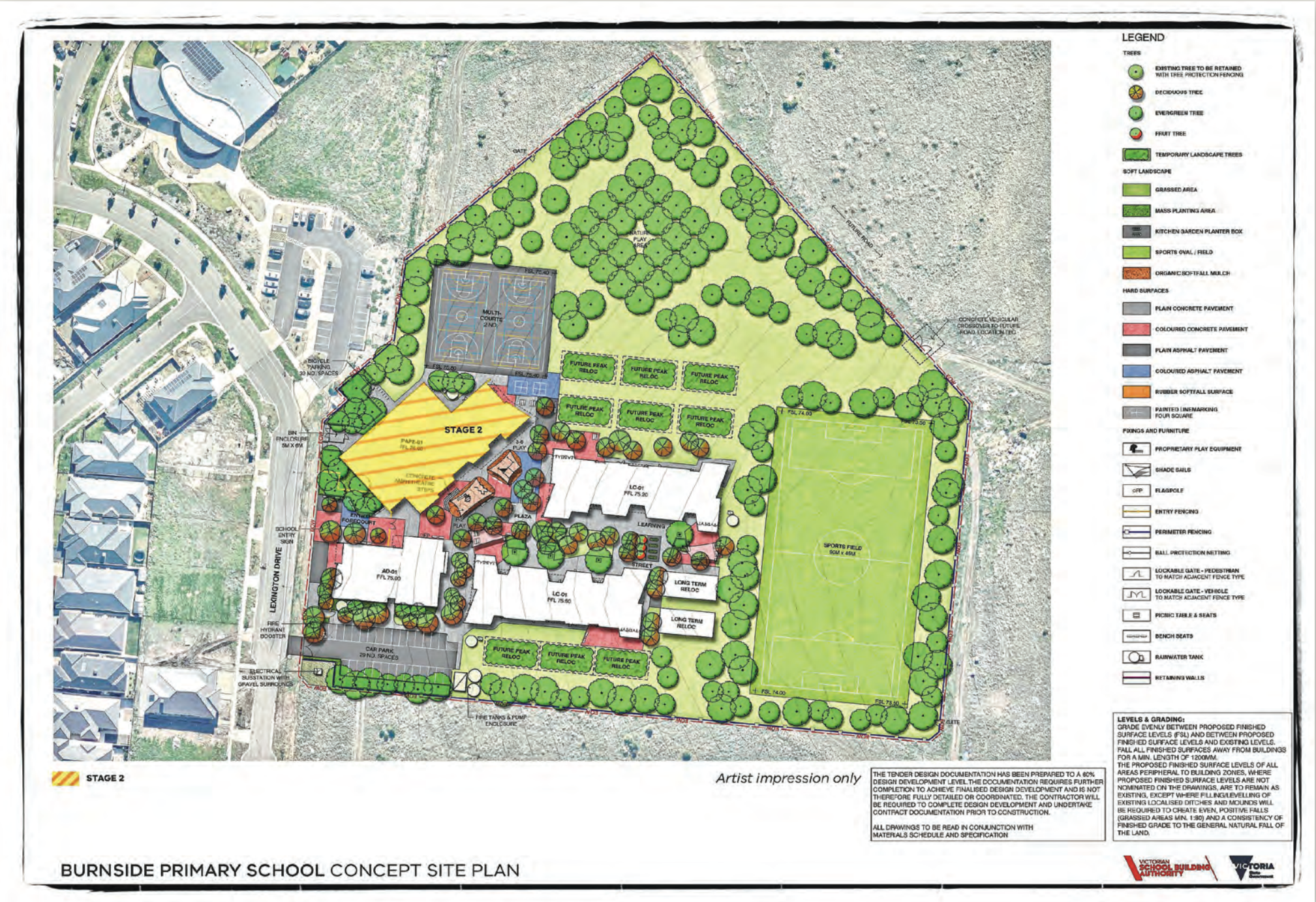
Building works at the site of the new Burnside Primary School are underway and on time for school gates to open on the first day of Term 1, 2019.

Situated just south of the Burnside Community Centre on Lexington Drive, the P-6 school will feature two state-of-the-art learning communities, complete with break-out collaboration spaces, creative activity spaces and withdrawal areas, as well as an administration building with library.

Spread over 3.5 hectares, the grounds will include a sporting field, two hard courts and open play areas.

It’s expected that enrolment boundaries for the school will be announced by mid year and eligible children will be invited to enrol in Term 3.

To watch a video of foundations going down at the new facility, go to: [youtube.com/watch?v=eY6MWH68750](https://www.youtube.com/watch?v=eY6MWH68750)





# Kororoit Creek Corridor

The program of landscaping and revegetation of Modeina's scenic Kororoit Creek Corridor will start with the hardscaping works scheduled to commence in late winter. These works will create an exercise station and a 600 metre extension to the shared cycle and walking path to Caroline Springs Town Centre. The new path will also link up to the Kororoit Creek Trail, the Western Ring Road Path and, ultimately, the Federation Trail.

Subsequent revegetation of the Corridor will create a buffer zone of native planting to establish a high-quality habitat for endangered plants and wildlife.

---

## Easter Egg Hunt

Perfect weather and an afternoon time slot combined to attract a large crowd at the recent Modeina Easter egg hunt.

A roving Easter Bunny, Happy Feet Fitness and wacky MC Dagogo kept kids on the hop with continuous entertainment while the adults in attendance took the opportunity to enjoy a complementary hot drink from the mobile coffee van.

Children of all ages participated in Easter egg hunts across the course of the afternoon. Organisers kept a close eye on proceedings to make sure each intrepid Easter egg hunter received their fair share of chocolate treasure.

---



## Movie Night

Blustery conditions were no deterrent to Modeina residents at the estate's inaugural outdoor movie night on Saturday, 17 February.

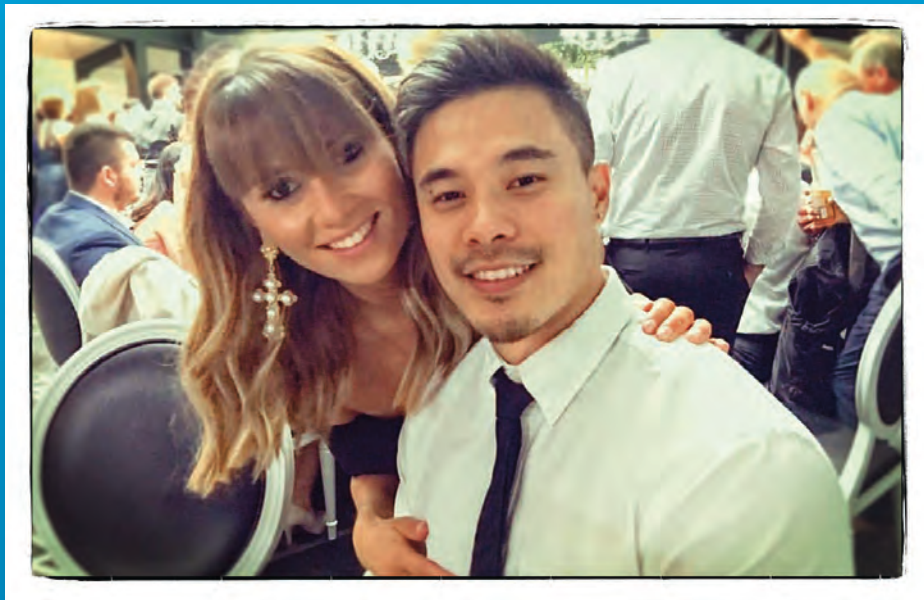
Modeina's Central Reserve proved to be the perfect venue for an open air movie event. Enthusiastic movie goers rugged up with blankets and settled back to watch 'Guardians of the Galaxy Vol 2' with a bit of music and popcorn on the side.

The ice cream truck was kept busy supplying patrons with treats, despite the cool weather conditions.

Organisers report that feedback from the crowd on the night was extremely positive and the Modeina team is already planning a follow-up event for later in the year.

# "We're really excited about our new life at Modeina"

*Hayley Brown & Kelvin Leong*



Young professional couple Hayley Brown and Kelvin Leong could not believe their luck when their Modeina Sales Consultant called to ask if they were interested in a lot that had just come back on the market.

"We didn't expect a block of land to come up so quickly, but when it did we just jumped at it!" recalls Hayley.

"The block we were offered suited us perfectly and even though it was a little earlier than we had originally planned to buy, we decided to seize the opportunity."

Fast forward just a few months and Hayley and Kelvin are now researching home designs that will suit their 448 square metre block of land.

High on the couple's list of priorities is a single storey home with four bedrooms and a rear living area that will take advantage of the block's northern orientation.

They plan to build a home that will accommodate their family in the years ahead, especially once kids come along.

"I am really happy that our new home will be just a few hundred metres from the planned primary school as I grew up living just around the corner from my school and absolutely loved it," explains Hayley.

"It's something I want my own children to experience."

From Modeina, city workers Kelvin and Hayley will commute to Melbourne's Southern Cross Station and have identified a number of rail transport options that will get them to the city in about half an hour.

The closest stations to their future home at Modeina are nearby Deer Park Railway Station or the newly opened Caroline Springs Railway Station, both of which are just a short drive away.

Hayley and Kelvin are also keen sportspeople and intend to regularly use Modeina's planned shared pathways for running and cycling. The couple already train at a nearby gym and Kelvin plays indoor soccer at a local sport centre.

"We are really excited about our new life at Modeina as Kelvin and I grew up in the area and are really pleased we can now settle down close to family," enthuses Hayley.

"Already we can see that Modeina has a strong sense of community; we know a few people who live in the estate and we hear that everyone is very friendly and considerate of one another."

# Community Centre Extension

Things are really kicking along with the extension of the Burnside Children’s and Community Centre. The planned addition of two community meeting rooms and a new kitchen will greatly improve the facility’s future capacity to cater for functions and events.

So far, the building’s steel framing has gone up, along with the flooring and roofing, and reports from council representatives indicate that the construction program is on track for completion in August. An official opening ceremony is scheduled for later this year.

---

## Westwood Drive Link Begins



Construction has commenced on Melton City Council’s \$9 million Westwood Drive road and bridge project, with completion expected in early 2019.

This significant and long-awaited infrastructure program comprises construction of almost 1km of new road between Tenterfield Drive and Fydlar Avenue, a bridge over Kororoit Creek, a new three metre wide shared pathway on the eastern side of the road and connection of the existing footpaths along the western side of the road.

---

## Land Sales Centre Hours

1300 724 723 | [modeina.com.au](http://modeina.com.au)

Sales Centre open daily 10am to 5pm  
6 Lexington Drive BURNSIDE

DFC (Project Management) Pty Ltd, an affiliated company of Dennis Family Corporation Pty Ltd, is the developer of the Modeina Estate and publisher of this brochure. "Dennis Family Corporation" and "Modeina" are trade marks used under licence.